

# the A Team

Alto Saxophone

Arrangement René Schols

## Intro

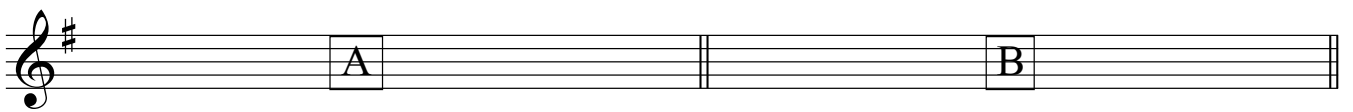
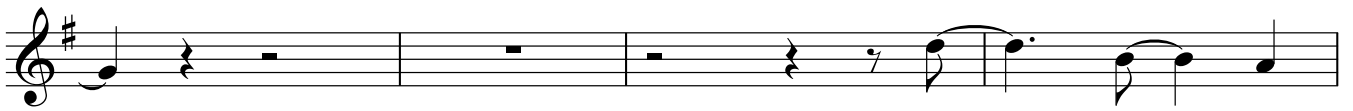
Two staves of musical notation for the Intro section. Both staves are in treble clef with a key signature of one sharp (F#). The first staff contains four measures of whole rests. The second staff contains four measures of whole rests, ending with a double bar line.

Musical notation for section A, consisting of two staves. The first staff begins with a square box containing the letter 'A' and a repeat sign. It contains eight measures of music, including quarter notes, eighth notes, and a dotted quarter note. A first ending bracket labeled '1.' spans the final two measures. The second staff continues the melody with eighth notes and quarter notes, ending with a double bar line. A second ending bracket labeled '2.' spans the final two measures of the second staff, which concludes with a quarter note and a quarter rest.

Musical notation for section B, consisting of four staves. The first staff begins with a square box containing the letter 'B' and contains eight measures of music. The second staff contains four measures of music. The third staff contains four measures of music. The fourth staff contains four measures of music. The notation includes various rhythmic values such as quarter notes, eighth notes, and dotted quarter notes, with some notes beamed together.



1.



2.

C



